



# ATHERTON FAMILY FOUNDATION

.....  
2015 ANNUAL REPORT



# ATHERTON FAMILY FOUNDATION

## 2015 ANNUAL REPORT

### CONTENTS

|   |           |
|---|-----------|
| <b>Foundation History .....</b>                     | <b>4</b>  |
| <b>Year in Review.....</b>                          | <b>6</b>  |
| <b>2015 Foundation Grants.....</b>                  | <b>10</b> |
| <b>Five-Year Comparative Summary of Grants.....</b> | <b>20</b> |
| <b>Grant Application Guidelines.....</b>            | <b>21</b> |
| <b>Scholarship Program.....</b>                     | <b>21</b> |



This report includes a representation of one of the world's rarest stamps, the 1851 "missionary." These stamps were used during the Hawaiian Monarchy by American missionaries stationed in Hawaii to send news to their friends and relatives in New England.





## DIRECTORS & OFFICERS

OFFICERS FROM LEFT TO RIGHT:

**Frank C. Atherton II** *PRESIDENT*

**Robin S. Midkiff** *VICE PRESIDENT*

**Patricia R. Giles** *VICE PRESIDENT AND TREASURER*

**Paul F. Morgan** *VICE PRESIDENT*

**Joan H. Rohlfing** *VICE PRESIDENT AND SECRETARY*

**Juliette K. Sheehan** *VICE PRESIDENT*





# HISTORY OF THE ATHERTON FAMILY & FOUNDATION

## JULIETTE M. ATHERTON

Juliette M. Atherton, the widow of Joseph B. Atherton, expressed her commitment to the welfare of the people of Hawaii with the creation of the Juliette M. Atherton Trust. On December 21, 1915, Mrs. Atherton transferred 20 percent of the outstanding shares of the Atherton Estate to her children, Charles H. Atherton, Mary A. Richards, and Frank C. Atherton. The 1,500 shares would be held in trust to continue the charitable work that Mrs. Atherton was vitally interested in throughout her life.

Mrs. Atherton originally retained the right to amend or revoke the trust. In 1921, the trust became an irrevocable charitable trust when she gave up her rights and amended the governing documents. This action was taken in recognition of the exemplary service performed by the trustees, and that they and succeeding trustees would perpetuate the trust's philanthropic purposes as intended by Mrs. Atherton. The deed directed that the trust income be used for:

*"... grants, loans, and other forms of payment toward assisting in the establishment, maintenance, or promotion of such religious, charitable, educational, benevolent, scientific, or other purposes, works, or enterprises, whether public or private, including schools, colleges, hospitals, asylums, homes, and the like institutions and objects for the public benefit, and including also the support and education of individuals during their attendance at any educational institution, and whether to corporations, associations, or other organizations or any private individual or individuals, as the Trustees shall in each case in their discretion and of their own volition approve."*

## FRANK C. ATHERTON

Frank C. Atherton, business executive and philanthropist, was born in Honolulu on July 1, 1877. He was the son of industrialist Joseph B. Atherton and Juliette M. Atherton, daughter of pioneer American missionaries to Hawaii. Mr. Atherton attended Wesleyan University in Middletown, Connecticut. Upon his return to Hawaii, he entered the world of finance and later became interested in industry. Like his forebears, he devoted much of his time to religious and civic works. On December 24, 1935, 10 years prior to his death, he established the Frank C. Atherton Trust to continue his support of religious, educational, and charitable programs and organizations. Grants and donations from the Frank C. Atherton Trust were primarily used to support charitable projects and programs in the state of Hawaii. In accordance with the purposes, expressed in the trust agreement, grants were for:

*"... the making of donations, contributions, subscriptions, loans, and other forms of payment for or toward assisting the establishment, maintenance and/or promotion of such religious, scientific, educational, and other charitable purposes and enterprises whether public or private, including churches, societies, schools, colleges, hospitals, asylums, homes, and like institutions and object for the public benefit."*

Mr. Atherton appointed Eleanore S. Atherton, Marjory A. Wightman, and himself as Trustees.





**ATHERTON FAMILY FOUNDATION**

In 1975, the trustees of the Juliette M. Atherton Trust initiated action, which resulted in the creation of the Atherton Family Foundation, a nonprofit corporation organized in the state of Hawaii. A charter of incorporation was granted on November 4, 1975. The trustees then voted unanimously to transfer all investment property and income of the trust to the Atherton Family Foundation and transfer instruments were executed in January 1976. In December 1976, the trustees voted unanimously to transfer the property of the Frank C. Atherton Trust to the Atherton Family Foundation and executed appropriate instruments shortly thereafter.

Historically, the policies, the type of requests considered, and the primary fields of interest of the Juliette M. Atherton Trust and the Frank C. Atherton Trust were similar in nature. Both trusts considered educational programs and institutions the highest priority, and gave careful attention to religious organizations and health and social services.

The consolidation of the two trusts fulfilled several objectives: to provide more efficient administration, to allow greater flexibility in foundation policies, to increase protection and growth of the investment assets, and to increase the number of members and directors.

The diversity of the directors’ perceptions and experiences has enhanced the Foundation’s capacity to respond to the community and broadened its representation of charitable interests.

The Atherton Family Foundation is now one of the largest endowed grantmaking private resources in the state of Hawaii devoted exclusively to the support of charitable activities. It perpetuates the philanthropic commitment expressed during the lifetimes of Juliette M. Atherton and Frank C. Atherton, and of the family who have followed them.

**ATHERTON FAMILY FOUNDATION  
TRUSTEES & SUCCESSORS**

.....

**ORIGINAL TRUSTEES**

Charles H. Atherton  
Frank C. Atherton  
Mary A. Richards

**SUCCESSOR TRUSTEES**

Alexander S. Atherton  
J. Ballard Atherton  
Judith M. Dawson  
Juliette M. Guard  
Robert R. Midkiff

Ruth R. Midkiff  
James F. Morgan  
Laura A. Morgan  
Joan H. Rohlfing  
Marjory A. Wightman

**CURRENT TRUSTEES**

Frank C. Atherton II  
Patricia R. Giles  
Robin S. Midkiff  
Paul F. Morgan  
Joan H. Rohlfing  
Juliette K. Sheehan



# 2015 YEAR IN REVIEW

## INVESTING IN OUR COMMUNITY

*The Atherton Family Foundation continues its mission to support nonprofit organizations in a broad range of fields that serve Hawaii. In 2015, the Foundation awarded \$3.6 million in grants to organizations doing important work in supporting and enhancing the lives of Hawaii residents.*

*Throughout the Foundation's history, grants have been made to invest in the efforts of organizations who are working to make system-wide improvements or to build the capacity of a sector in our community. These investments included partnering with other funders to make a larger impact and in supporting an effort that resulted in a new or improved resource for the community at-large.*







## AWAIAULU, INC.

Awaiaulu is dedicated to developing resources and resource people that can bridge Hawaiian knowledge from the past to the present and the future. Historical resources are made available to build the knowledge base of both Hawaiian and English-speaking audiences and train young scholars to understand and interpret those resources for modern audiences. Awaiaulu works to perpetuate and advance the use of the Hawaiian language through training Hawaiian language translators and editors; generating Hawaiian language publications for educational use; and researching, translating and presenting historical Hawaiian language publications for modern audiences in both Hawaiian and English.

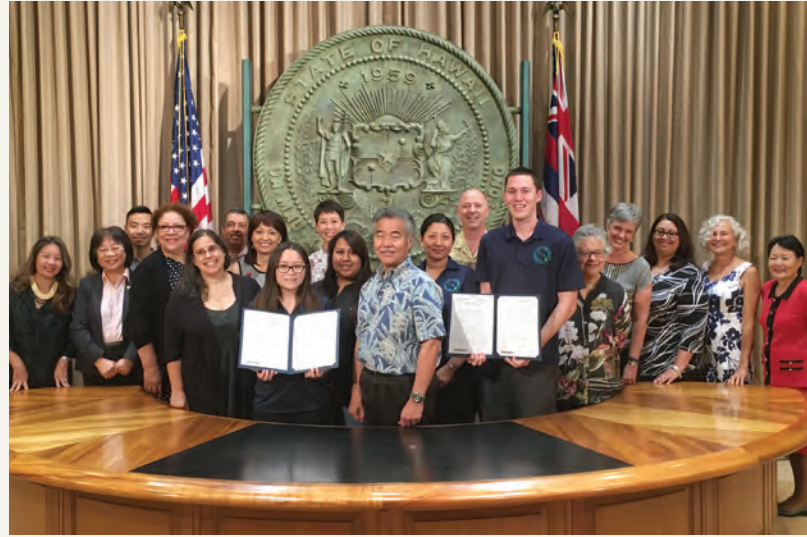
The Foundation awarded a grant over three years to Awaiaulu to train proficient speakers of Hawaiian in translating historical materials from Hawaiian to English. The project resulted in the training of six translators who participated in weekly assignments of translating Hawaiian publications. The participants experienced the art and mastery of editing the text to ensure the accurate translation of meaning and intent of each publication. They also met with trainers who mentored their work and provided guidance as well as the opportunity of self-discovery for the participants. Kamuela Yim, a translation trainer stated, *"Overall, this process has, more than any other before it, grown my professionalism, language skills, and overall grit in getting something done at the highest level possible. It is the only mentorship of its kind for any passionate person to pursue excellence in Hawaiian language beyond the scope of the university. I'm proud to be a member."*





## EFFECTIVE PLANNING AND INNOVATIVE COMMUNICATION, INC.

Effective Planning and Innovative Communication, Inc. (EPIC Ohana, Inc.) works to strengthen ohana or families and enhance the welfare of children and youth through transformative processes that are respectful, collaborative, and solution-oriented. As part of their work with young people transitioning out of the foster care system, EPIC Ohana serves as the site team leader for the Hawaii Youth Opportunities Initiative (HYOI), a site of the national Jim Casey Youth Opportunities Initiative. HYOI helps youth leaving foster care become successful adults in Hawaii. They work with youth and community partners to provide access to education, employment, financial capability, health care, housing, family relationships, and community connections. Many of the young people leaving foster care do not have the skills, the family, or community networks necessary to make successful transitions to adulthood. As a result, young people who age out of foster care represent one of the most vulnerable groups for negative outcomes — homelessness, incarceration, low educational achievement, teen pregnancy, and poverty.



The Foundation provided long-term support and commitment to HYOI as it began its work in Hawaii in 2010 and expanded statewide in 2012. HYOI works with community partners to support the youth voice to advocate for systems change. The young people's lived experience and passion to improve life for their younger foster brothers and sisters has led the state to extend voluntary foster care up to age 21, to provide medical insurance up to age 26, and to revise policies and practices to better support the well-being of young people in foster care.

HYOI also works with community partners to provide opportunities for current and former foster youth to develop financial capability skills. In its first six years, HYOI provided financial literacy training to more than 550 young people. These young people made over 500 matched asset purchases that total more than \$600,000. In addition, HYOI has launched financial coaching and starter savings programs so more young people can develop their personal financial expertise.







## THE TRUST FOR PUBLIC LAND

The Atherton Family Foundation has a long history of supporting The Trust for Public Land (TPL). The Foundation has been a leading partner, making its first grant to the organization in 1999 to assist with opening TPL's Hawaii office. Since then, the Foundation has supported their work to establish \$198 million in conservation funding at the state and county levels; protect Muolea Point on the island of Maui; start TPL's Native Lands program; and create an Oahu Greenprint that reflects grassroots community-based priorities for conservation.

In 2015, the Foundation awarded a grant that enabled TPL and Aloha Kuamoo Aina to purchase and preserve the Kuamoo Battlefield and Burial Grounds in South Kona on Hawaii Island. Kuamoo is a very special place — the site of a

momentous battle in 1819 between Kamehameha II's army and the forces of his cousin, Chief Kekuaokalani. At the battle's end, the kapu system was abolished and the traditional religious practices of Hawaii's people were set aside. Only three months later, the first Christian missionaries arrived bringing a new set of beliefs and rules that forever changed the history of Hawaii. Today, the battle site is important to Native Hawaiians and all the people of Hawaii Nei. It includes hundreds of significant historic sites, including burial mounds, shrines, house sites, farming areas, heiau, and a section of the Ala Kahakai National Historic Trail. The conservation purchase guarantees that the landscape will never be developed, and will live on for future generations as a center of education, peace, justice, and reconciliation.



# 2015 FOUNDATION GRANTS

## ART, CULTURE & HUMANITIES

### CAPITAL

#### ARTSPACE PROJECTS, INC.

Ola Ka Ilima Artspace Lofts, a Mixed-use Development.....50,000

#### HERITAGE HALL, INC.

Heritage Hall Construction.....25,000

#### MAUI COMMUNITY THEATER

Microphones.....10,000

#### WAIOLI CORPORATION

Museum Exhibit and Office Equipment Project.....4,500

#### WEST HAWAII DANCE THEATRE

Viewing Room & Entry Renovation.....5,000

#### TOTAL FOR ARTS, CULTURE

& HUMANITIES CAPITAL.....\$94,500

### PROGRAM

#### AWAIAULU, INC.

Training of Trainers.....36,333

#### BAMBOO RIDGE PRESS

Bamboo Ridge Basic.....3,000

#### CHAMBER MUSIC HAWAII

The Pakaa Project, Bi-Lingual Music CD and Teacher Guide  
of Pakaa Lanakila by Jon Magnussen.....5,000

#### FROM THE HEART PRODUCTIONS, INC.

Rise of the Wahine Documentary Film Project.....10,000

#### HAWAII MAOLI

Koolaupoko Hawaiian Civic Club: No Koolau Mai Au.....10,000

#### HAWAII CHILDREN'S THEATRE

HCT PONO Players 2015–2016.....3,000

#### HAWAII CRAFTSMEN

Basic Program Expansion.....5,000

#### HAWAII OPERA THEATRE

Hawaii Opera Theatre Production of Shakespeare's  
A Midsummer Night's Dream by Benjamin Britten.....15,000

#### HAWAII PERFORMING ARTS FESTIVAL

Expanding Hawaii Performing Arts Festival's Scope.....5,000

#### HAWAII SYMPHONY ORCHESTRA

Hawaii Symphony Orchestra 2015–2016 Season.....15,000

#### HAWAII THEATRE CENTER

Hawaii Theatre Center's Student Matinee Series.....12,500

#### HAWAIIAN HISTORICAL SOCIETY

Hawaiian Historical Society Collections Preservation Project...25,000

#### HAWAIIAN MISSION CHILDREN'S SOCIETY

Illuminating the Partnership Between American Protestant  
Missionaries and Hawaiian Alii.....100,000

#### HOLUALOA FOUNDATION FOR ARTS AND CULTURE

Wood/Ink/Fiber: An Exhibition of Woodblock Printing  
from the Hawaiian Islands.....3,000

#### HONOLULU ACADEMY OF ARTS DBA

#### HONOLULU MUSEUM OF ART

General Support.....2,000

#### HONOLULU ACADEMY OF ARTS DBA

#### HONOLULU MUSEUM OF ART

Honolulu Museum of Art: An Ally for Academic  
Achievement for Title 1 Schools.....45,000

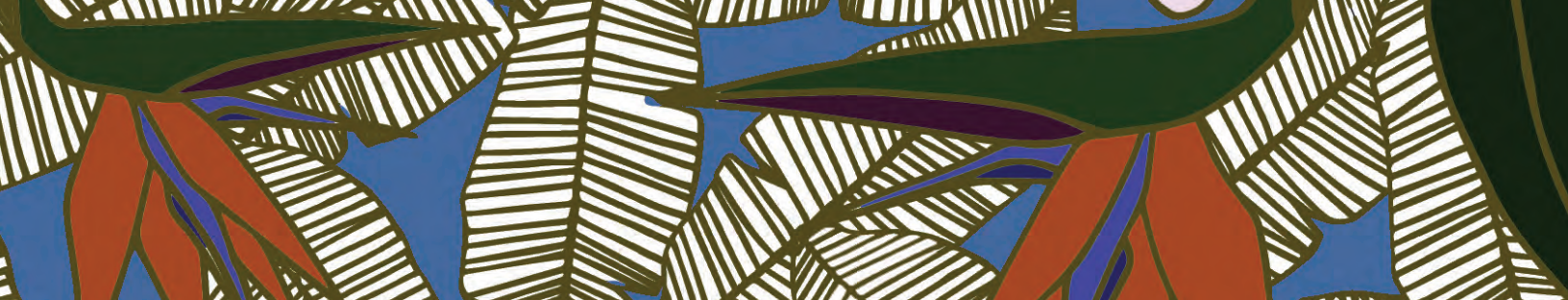
#### HONPA HONGWANJI MISSION OF HAWAII

Katsu Goto Memorial Committee:  
Honokaa Hero: The Story of Katsu Goto.....20,000

#### KAHILU THEATRE FOUNDATION

Waimea Ukulele and Slack Key Guitar Institute.....5,000





#### KULA NO NA POE HAWAII

Kula no na Poe Hawaii — Papakolea's Board and Stone:

Train the Trainers.....15,000

#### MAKAWAO UNION CHURCH

Organ Enhancement Project.....20,000

#### MALIE FOUNDATION

Kauai Mokihana Festival 2016 Hawaiian

Cultural Media Development.....15,000

#### OAHU CHORAL SOCIETY

Creation of Honolulu Chamber Choir.....10,000

#### PAI FOUNDATION

Hoopaeapae: Building a Strong Foundation.....35,000

#### SOCIETY FOR KONA'S EDUCATION & ART

Workshop Series — Growing, Living, Creating.....3,000

#### THE CENTER FOR INDEPENDENT DOCUMENTARY, INC.

Ku Kanaka/Stand Tall.....10,000

#### VOLCANO ART CENTER

Sculpture Garden at Niaulani.....4,000

#### WASHINGTON PLACE FOUNDATION

General Support.....2,000

#### YOUNG OF HEART WORKSHOP

CONTACT 2016.....10,000

#### TOTAL FOR ARTS, CULTURE

& HUMANITIES PROGRAM..... **\$443,833**

### COMMUNITY DEVELOPMENT

#### CAPITAL

##### HALEIWA MAIN STREET

Completing Restoration of Haleiwa

Mutual Telephone Building.....10,000

##### KAAHUMANU CHURCH

Kaahumanu Church Restoration.....25,000

#### KALANI HONUA, INC. CULTURAL CENTER & RETREAT

The Market at Kalani.....5,000

#### KANU O KA AINA LEARNING OHANA

Community Recreation Center — Halau Hookipa.....25,000

#### PACIFIC GATEWAY CENTER

Pacific Gateway Center 3rd Floor Construction.....20,000

#### WAIPA FOUNDATION

Waipa Foundation Community Kitchen,

Poi Mill, and Hale Imu — A Capital Project.....33,334

#### TOTAL COMMUNITY

DEVELOPMENT CAPITAL..... **\$118,334**

#### PROGRAM

##### ANEKONA OULI KANEHOA VFD COMPANY

General Support.....3,500

##### HAWAII APPLESEED CENTER

##### FOR LAW & ECONOMIC JUSTICE

Creating Affordable Housing Through

Accessory Dwelling Units (ADUs).....10,000

##### KANU HAWAII

Your Voice In Government Online Portal.....5,000

##### KAUAI PATH INC.

North Shore Path Planning Project.....5,000

##### YMCA OF HONOLULU, METROPOLITAN OFFICE

General Support.....8,500

#### TOTAL COMMUNITY

DEVELOPMENT PROGRAM..... **\$32,000**

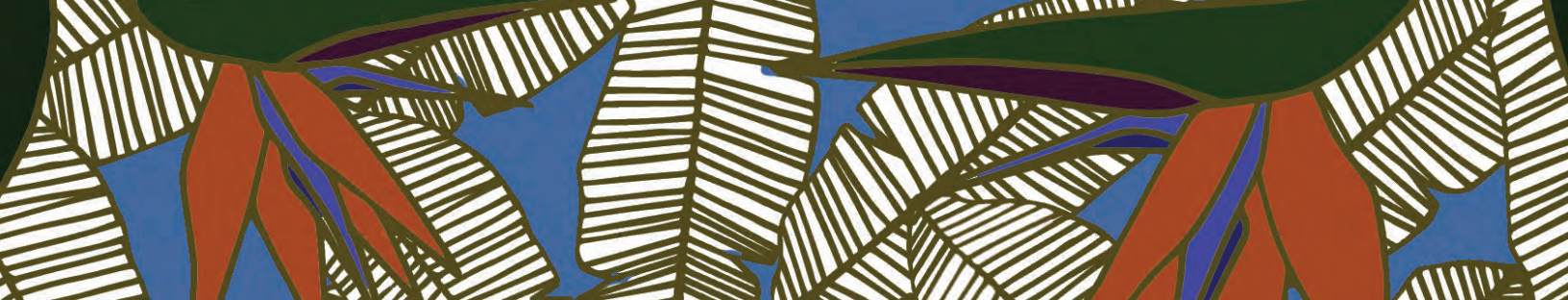
### EARLY CHILDHOOD EDUCATION

#### CAPITAL

##### ALOHA SCHOOL EARLY LEARNING CENTER INC.

Aloha School Early Learning Center's

2015 Atherton Family Grant Request.....10,000



#### KAI LOA INC.

Na Pualei Early Learning Center.....20,000

#### MAKIKI CHRISTIAN CHURCH

Makiki Christian Church Preschool

Outdoor Classroom & Play Area Renovation.....15,000

#### PARENT PARTICIPATION NURSERY SCHOOL

Building for Fun Playground Project

at PPNS Preschool Kailua.....10,000

#### SMALL WORLD PRESCHOOL

Preschool Flooring Upgrades.....15,000

#### THE KOLOA EARLY SCHOOL

Playground Renewal and Improvement.....5,000

#### TOTAL FOR EARLY CHILDHOOD

EDUCATION CAPITAL.....**\$75,000**

#### PROGRAM

##### BRIGHT BEGINNING PRESCHOOL

Playground & Physical Education Equipment & Instructor.....40,000

##### GOOD BEGINNINGS ALLIANCE

Improving Outcomes for Children in Early Childhood.....25,000

##### PATCH (PEOPLE ATTENTIVE TO CHILDREN)

PATCH Food Program.....20,000

##### WAIKIKI COMMUNITY CENTER

Keiki Building Community.....10,000

#### TOTAL FOR EARLY CHILDHOOD

EDUCATION PROGRAM.....**\$95,000**

### EDUCATION

#### CAPITAL

##### ALAKAINA FOUNDATION

STEM On the Go — Digital Bus Program.....25,000

#### ASSESTS SCHOOL

Assets School's Academy of the Pacific

Campus — Mary Mills Damon Hall Repairs.....25,000

#### CHAMINADE UNIVERSITY OF HONOLULU

New Intercollegiate Athletics Support Facilities.....50,000

#### HAWAII BAPTIST ACADEMY

Hawaii Baptist Academy Capital Campaign.....25,000

#### HAWAII PUBLIC TELEVISION FOUNDATION

##### DBA PBS HAWAII

PBS Hawaii NEW HOME Campaign.....50,000

#### HOLY NATIVITY SCHOOL

Learning Environment/Classroom Upgrades.....15,000

#### KAIMUKI CHRISTIAN CHURCH

Capital Project: 2.5 Story Educational Center.....25,000

#### LA PIETRA – HAWAII SCHOOL FOR GIRLS

La Pietra Classroom Transformation Project.....25,000

#### MID-PACIFIC INSTITUTE

Building on Excellence Campaign.....100,000

#### MOHALA PUA SCHOOL

Honolulu Waldorf High School.....20,000

#### ST. JOHN VIANNEY PARISH SCHOOL

A New Art Classroom — Lab for Art Education.....15,000

#### ST. JOSEPH SCHOOL — HILO

St. Joseph Hilo Restroom Rehabilitation Project.....25,000

#### TOTAL FOR

EDUCATION CAPITAL.....**\$400,000**

#### PROGRAM

##### AFTER-SCHOOL ALL-STARS HAWAII

Life Service Action, A Service Learning Initiative.....15,300

##### BIG ISLAND MEDIATION, INC.

Phase 3: Middle/High School Pilot Program:

Conflict Resolution Education and Peer Mediation.....12,500





#### BOOK TRUST

Empowering Palolo Students Through Literacy.....5,000

#### CIRCLES OF LIGHT

Filmmaking Bootcamp.....5,000

#### HAWAII ALLIANCE FOR COMMUNITY-BASED ECONOMIC DEVELOPMENT

Ohana Based Youth Savings Initiative and Financial Literacy Program.....15,000

#### HAWAII BRANCH OF THE INTERNATIONAL DYSLEXIA ASSOCIATION

General Support.....5,000

#### HAWAII COMMUNITY FOUNDATION

Community Scholarship Fund.....25,000

#### HAWAII HOMEOWNERSHIP CENTER

Increasing Homeownership Sustainability.....10,000

#### HAWAII PREPARATORY ACADEMY

General Support.....2,000

#### HAWAIIAN MISSION CHILDREN'S SOCIETY

General Support.....12,000

#### HONOLULU COMMUNITY ACTION PROGRAM

Ha Initiative: Creative STEM After-School Program.....10,000

#### HOPE STREET GROUP

Hawaii State Teacher Fellowship.....5,000

#### INSTITUTE FOR NATIVE PACIFIC EDUCATION AND CULTURE

Kulia and Ka Lama Education Academy.....25,000

#### JUNIOR ACHIEVEMENT OF HAWAII, INC.

JA Company Digital Program Launch.....10,000

#### KCAA PRESCHOOLS OF HAWAII

General Support.....5,000

#### LA PIETRA – HAWAII SCHOOL FOR GIRLS

General Support.....5,000

#### LEADERSHIP KAUAI

Kauai: Voyaging from the Past to the Future.....15,000

#### MALAMA LEARNING CENTER

Kahi Kai: Using iPhone-Equipped CellScopes to Explore Concepts of Marine Biodiversity and Ocean Health.....10,000

#### MAUI PREPARATORY ACADEMY

STEAM Program.....10,000

#### PAEPAE O HEEIA

Pani ka Puka.....10,000

#### PARKER SCHOOL

General Support.....2,000

#### ST. ANDREW'S PRIORY SCHOOL

Launch of St. Andrew's Preparatory School for Boys.....25,000

#### STATE OF HAWAII, DEPT. OF EDUCATION, SUNSET BEACH ELEMENTARY SCHOOL

Right on Reader.....1,000

#### SUSTAINABLE MOLOKAI

Farm to School Program.....2,000

#### TEACH FOR AMERICA

Educational Equity in Hawaii.....25,000

#### USS MISSOURI MEMORIAL ASSOCIATION, INC.

Battleship Missouri Memorial — Field Trip Financial Assistance...5,000

**TOTAL FOR EDUCATION PROGRAM.....\$271,800**

### ENVIRONMENT

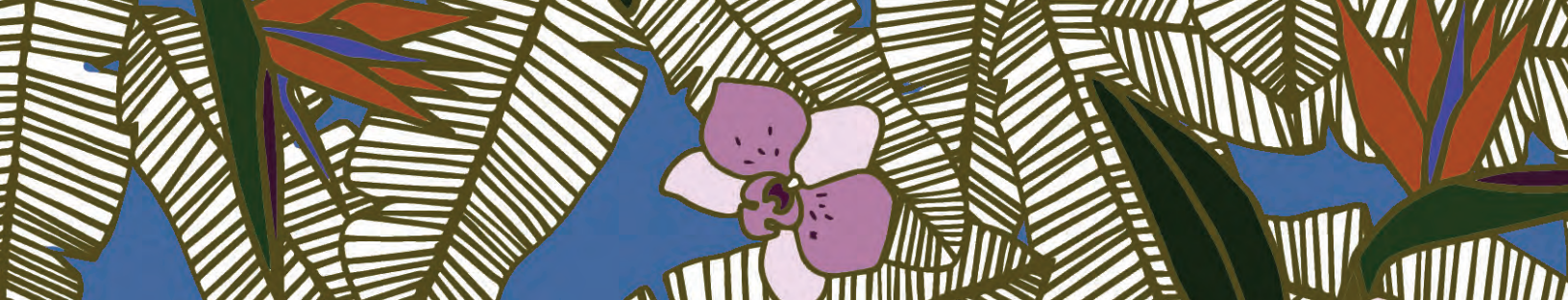
#### CAPITAL

#### FRIENDSHIP GARDEN FOUNDATION

Garden Entrance Improvements.....25,000

#### HAWAIIAN HUMANE SOCIETY

Hawaiian Humane Society Capital Campaign.....50,000



#### RE-USE HAWAII

Capacity Expansion.....20,000

#### THE MARINE MAMMAL CENTER

Hawaiian Monk Seal Health Care Facility.....30,000

#### THREE RING RANCH INC.

Carport Tractor Cover.....10,000

**TOTAL FOR ENVIRONMENT CAPITAL.....\$135,000**

#### PROGRAM

##### AMERICAN BIRD CONSERVANCY

Exploratory Acoustic Surveys to Locate  
Imperiled Seabirds on Molokai, Hawaii.....5,000

##### BIKESHARE HAWAII

Location-based Station Siting  
Outreach & Bikeshare Demonstration.....10,000

##### CENTER FOR FOOD SAFETY

Building a Safer, Healthier Food System for Hawaii.....20,000

##### CENTER FOR FOOD SAFETY

General Support.....2,000

##### CONSERVATION INTERNATIONAL FOUNDATION

Integrating Traditional Management, Science and Technology  
to Support Community Resource Stewardship.....40,910

##### EARTHJUSTICE

Community Organizing for Renewable Energy in Hawaii.....5,000

##### HAWAII COMMUNITY FOUNDATION

Environmental Funders Group.....25,000

##### HAWAII COMMUNITY FOUNDATION

Hawaii Fresh Water Initiative — Implementation Phase.....75,000

##### HAWAII FOREST INSTITUTE

Mahalo Aina HPR Educational Radio Series.....10,000

##### HAWAII SEED

Hawaiian Banana Propagation Project.....15,000

#### HAWAIIAN ISLANDS LAND TRUST

Multi-island Environmental Education Series, 2015–2016.....10,000

#### ISLAND CONSERVATION

Baseline Environmental Monitoring in Advance  
of the Removal of Introduced Rats from Lehua Island.....10,000

#### KALANIHALE

Strengthening Management of Marine Resources in  
Milolii South Kona, Hawaii Spay/Neuter Program.....20,000

#### MALAMA LOKO EA FOUNDATION

Waiola Project.....10,000

#### MALAMA PUPUKEA — WAIMEA

Ka Papa Kai: Developing Responsibility  
for Ocean Stewardship.....5,000

#### NATIONAL MARINE SANCTUARY FOUNDATION

Hawaiian Islands Entanglement Response Network —  
Community Outreach and Engagement Initiative.....10,000

#### OAHU RESOURCE CONSERVATION & DEVELOPMENT COUNCIL

The Green House:  
Center for Creative Reuse — Planning Phase.....25,000

#### OAHU RESOURCE CONSERVATION & DEVELOPMENT COUNCIL

Innovations in Conservation Planning.....10,000

#### POLYNESIAN VOYAGING SOCIETY

Worldwide Voyage (WWV): Island Wisdom,  
Ocean Connections, Global Lessons.....100,000

#### PURDUE UNIVERSITY

The Tropical Hardwood Tree  
Improvement and Regeneration Center.....25,000

#### THE NATURE CONSERVANCY OF HAWAII

Science Informing Community-based  
Marine Management in Maui Nui.....33,333





#### THE NORTH SHORE COMMUNITY LAND TRUST

Kahuku Kawela Forever.....25,000

#### TRUST FOR PUBLIC LAND

Kuamoo Battlefield.....50,000

**TOTAL FOR ENVIRONMENT PROGRAM.....\$541,243**

### HEALTH

#### CAPITAL

##### AMERICAN CANCER SOCIETY

Hope Lodge Hawaii — Temporary Housing Facility  
for Cancer Patients Who Are Undergoing Treatment.....25,000

##### CASTLE MEDICAL CENTER

Emergency Department Expansion and Renovation.....33,333

##### HILO MEDICAL CENTER FOUNDATION

OB/PEDs Renovation Project.....20,000

##### KAPIOLANI HEALTH FOUNDATION

Campaign for Hawaii's Children: Phase I Renovation of Kapiolani  
Medical Center for Women & Children.....50,000

##### LANAI COMMUNITY HEALTH CENTER

Lanai Community Health Center —  
New Facility Construction.....25,000

##### NORTH HAWAII HOSPICE, INC.

Capital Campaign: A New Meeting Place for  
Hospice Patient Care Staff.....50,000

##### REHABILITATION HOSPITAL OF THE PACIFIC FOUNDATION

Third Floor Unit Team Station.....40,000

##### SISTERS OF ST. FRANCIS OF THE NEUMANN COMMUNITIES

Sister Health, Safety, and Comfort.....10,000

#### ST. FRANCIS HEALTHCARE FOUNDATION OF HAWAII

St. Francis Skilled Nursing Facility.....50,000

#### THE QUEEN'S MEDICAL CENTER

Renovations to The Queen's Medical Center — West Oahu.....50,000

#### WEST HAWAII COMMUNITY HEALTH CENTER

West Hawaii Community Health Center — Kealahou.....50,000

**TOTAL HEALTH CAPITAL .....\$403,333**

#### PROGRAM

##### AMERICAN DIABETES ASSOCIATION

Red Rider Program.....2,000

##### EPILEPSY FOUNDATION OF HAWAII

Neighbor Island Training Program.....7,500

##### HAWAIIAN EYE FOUNDATION

Cataract Surgery Days (for the Poor & Disabled).....20,000

##### HEALTHY MOTHERS, HEALTHY BABIES COALITION OF HAWAII

Hawaii Cribs for Kids Expansion.....10,000

##### HOSPICE OF HILO

Hawaii Palliative Care Center Public Education Campaign.....5,000

##### I OLA LAHUI, INC.

General Support.....5,000

##### KOKUA KALIHI VALLEY COMPREHENSIVE FAMILY SERVICES

Kalihi TOD Health Impact Assessment.....10,000

##### MALAMA PONO HEALTH SERVICES

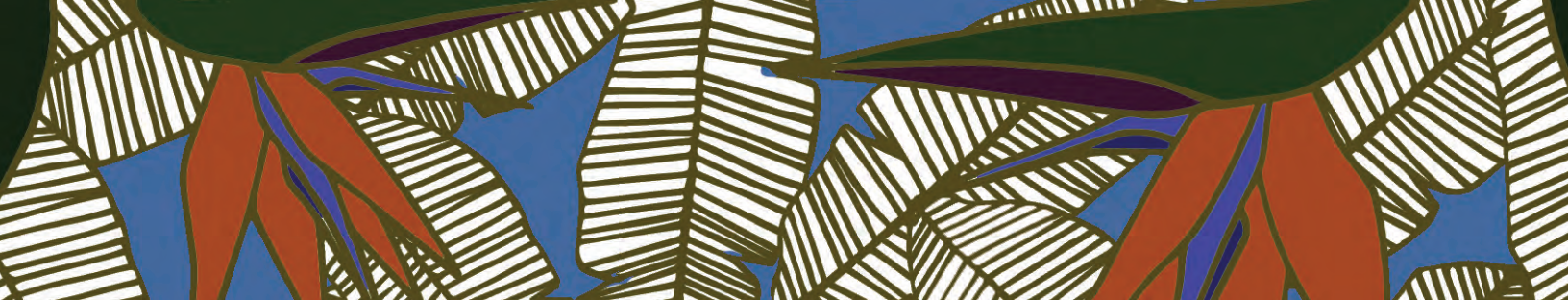
Women's Health Care Services.....20,000

##### MAUI AIDS FOUNDATION

Maui AIDS Foundation Overview Film Documentary.....2,000

##### PLANNED PARENTHOOD OF HAWAII

Got LARC? Get LARCS!.....25,000



#### ST. THERESA'S CHURCH

Hale Kau Kau: Feeding the  
Hungry and Homebound of South Maui.....10,000

#### WAHIAWA CENTER FOR COMMUNITY HEALTH

The WCCH Organizational Capacity Building Project.....12,000

**TOTAL HEALTH PROGRAM..... \$128,500**

### HUMAN SERVICES

#### CAPITAL

##### ALOHA HOUSE, INC.

Request for Funding of Construction of a Covered  
Deck for Residential Treatment Program.....5,000

##### EASTER SEALS HAWAII

Increasing Community Experiences for Adults  
with Disabilities Through a Wheelchair-Accessible Van.....15,000

##### GUIDE DOGS OF HAWAII (ADAPTIVE AIDS, CANINES & ADVOCACY FOR BLIND STUDENTS

Get Ahead With Technology For Blind Students.....5,000

##### HABITAT FOR HUMANITY WEST HAWAII

14-foot Box Truck with Lift Gate.....25,000

##### HAWAII CANINES FOR INDEPENDENCE, INC.

Wheelchair Van.....15,000

##### HONOLULU HABITAT FOR HUMANITY

Truck Purchase to Build Affordable  
Housing for Native Hawaiians.....15,000

##### IHS, THE INSTITUTE FOR HUMAN SERVICES, INC.

IT and Data Management Capacity Building:  
Improving Service Delivery & Organizational Effectiveness.....25,000

##### MALAMA NA MAKUA A KEIKI

Malama Family Recovery Center  
Request for Support of Zero Client Upgrades.....3,500

#### MAUI FAMILY SUPPORT SERVICES

MFSS Data Capacity and Systems Upgrade.....17,400

#### THE ALCOHOLIC REHABILITATION SERVICES OF HAWAII, INC.

Pakui Hale (Additional Home).....25,000

#### THE ARC OF HILO

Capital Expansion — Multi Purpose Facility.....25,000

#### THE FOOD BASKET INC.

West Hawaii Warehouse Improvements.....30,000

**TOTAL FOR HUMAN  
SERVICES CAPITAL.....\$205,900**

#### PROGRAM

##### ACCESSURF HAWAII INC.

Day at the Beach (DATB).....10,000

##### ADULT FRIENDS FOR YOUTH

Chuukese Girl's Project.....10,000

##### ALOHA HARVEST

Feeding Oahu's Hungry through Food Rescue.....25,500

##### CHILD AND FAMILY SERVICE

Transition to Success.....15,000

##### CHILDREN'S ALLIANCE OF HAWAII, INC.

Hoomaka & SOUL (for Boys).....6,000

##### FAMILY PROGRAMS HAWAII

Hawaii Adoption Resources.....20,000

##### FAMILY SUPPORT SERVICES OF WEST HAWAII

The Fatherhood Initiative — Great Fathers of Hawaii.....20,000

##### HANDS IN HELPING OUT, INC.

HIHO Academy.....4,000

##### HAWAII CANINES FOR INDEPENDENCE, INC.

General Support.....500





#### HAWAII COMMUNITY FOUNDATION

Pathways to Resilient Communities.....100,000

#### HELPING HANDS HAWAII

Housing Support for Chronically Homeless Individuals.....20,000

#### HOPE SERVICES HAWAII, INC.

Hawaii Island Homeless Service Expansion Project.....30,000

#### KA OHANA O KALAUPAPA

Healing and Reconciliation for the Families of Kalaupapa.....10,000

#### KAUAI FOOD BANK INC.

Kupuna Program.....7,000

#### KUIKAHI MEDIATION CENTER, INC.

Transforming Conflict: Community  
Education & Peer Mediation.....10,000

#### NETWORK ENTERPRISES, INC.

Assistive Technology Training — Highly  
Personalized for People with Disability.....3,000

#### ST. CATHERINE CHURCH

St. Catherine Food Pantry.....5,000

**TOTAL FOR HUMAN  
SERVICES PROGRAM.....\$296,000**

### OTHER

#### PROGRAM

#### THE FOUNDATION CENTER

2015 General Support.....2,500

**TOTAL FOR OTHER PROGRAM.....\$2,500**

### RELIGION/SPIRITUAL DEVELOPMENT

#### CAPITAL

#### CATHEDRAL CHURCH OF ST. ANDREW

St. Andrew's Restoration, Phase I:  
Renovation of Davies Hall.....60,000

#### CHURCH OF THE CROSSROADS

Crossroads Renovation Project.....30,000

#### KALIHI UNION CHURCH

Multipurpose Facility/Gym Renovation Project.....25,000

**TOTAL RELIGION/SPIRITUAL  
DEVELOPMENT CAPITAL.....\$115,000**

#### PROGRAM

#### KALAHIKIOLA CONGREGATIONAL CHURCH

General Support.....2,500

**TOTAL RELIGION/SPIRITUAL  
DEVELOPMENT PROGRAM.....\$2,500**

### YOUTH DEVELOPMENT

#### CAPITAL

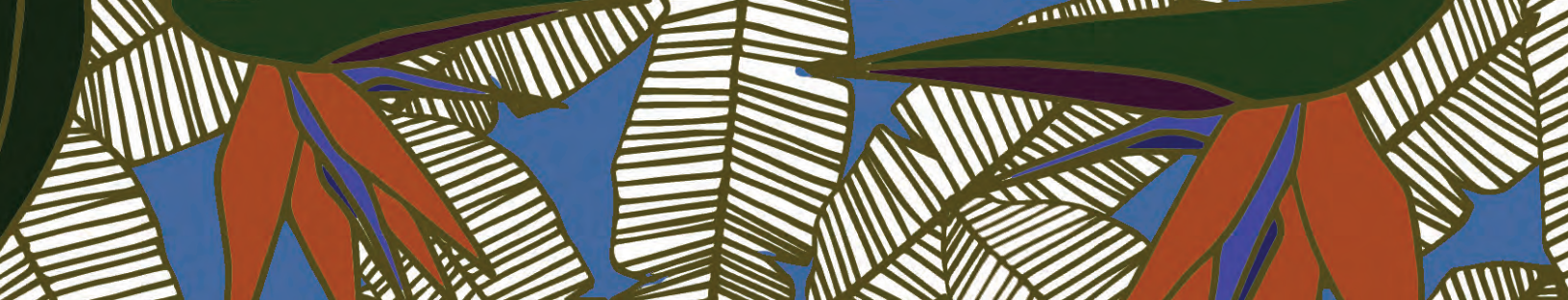
#### ALOHA VOLLEYBALL ASSOCIATION

Adding Sand to Youth Sand Volleyball Facility.....5,000

#### CAMP HALE KOA ASSOCIATION

Cabin Refurbishment for Six Cabins  
Which House Campers at Camp Hale Koa.....20,000

**TOTAL YOUTH  
DEVELOPMENT CAPITAL.....\$25,000**



## PROGRAM

### BIG BROTHERS BIG SISTERS HAWAII, INC.

West Hawaii Island Expansion.....20,000

### BOYS AND GIRLS CLUB OF THE BIG ISLAND

The Hua Ola Healthy Lifestyles Project.....15,000

### EFFECTIVE PLANNING INNOVATIVE COMMUNICATION, INC.

Hawaii Youth Opportunities Initiative.....50,000

### HAWAII WOMEN IN FILMMAKING

Girls Making Media That Matters.....10,000

### HOOKUAAINA

Kaleopaa Project.....15,000

### LE FETUAO SAMOAN LANGUAGE SCHOOL

Ukulele Lessons and Community Outreach.....6,000

### MAKING DREAMS COME TRUE, VALLEY OF RAINBOWS INC.

Summer Intern Program — Fostering Real Life Skills.....4,000

### MEDIATION SERVICES OF MAUI INC.

Youth Conflict Resolution Training.....10,000

### MENTAL HEALTH AMERICA OF HAWAII

Youth Leadership Council to Prevent Suicide.....8,000

### NA KAMA KAI

Ocean Safety and Conservation Clinics

Offered Free to the Keiki on Oahu.....10,000

### PACIFIC AMERICAN FOUNDATION

The Calling: Heal Ourselves, Heal Our Planet: The Calling

Punahele Youth Empowerment Pilot Program.....20,000

### PURPLE MAIA FOUNDATION

Kaikaina Project.....3,000

### WAIALUA BULLPUPS FOOTBALL ASSOCIATION

Uniforms and Equipment for

Cheer and Junior Midget Teams.....5,000

### YESHUA OUTREACH CENTER

Yeshua Community Outreach Transportation.....40,000

### TOTAL YOUTH

DEVELOPMENT PROGRAM.....\$216,000

### TOTAL ATHERTON FAMILY

FOUNDATION GRANTS CAPITAL.....\$1,572,067

### TOTAL ATHERTON FAMILY

FOUNDATION GRANTS PROGRAM.....\$2,029,376



# 2015 TOTAL GRANTS

ARTS, CULTURE AND HUMANITIES \$538,333



COMMUNITY DEVELOPMENT \$150,334



EARLY CHILDHOOD EDUCATION \$170,000



EDUCATION \$671,800



ENVIRONMENT \$676,243



HEALTH \$531,833



HUMAN SERVICES \$501,900



OTHER \$2,500



RELIGION/SPIRITUAL DEVELOPMENT \$117,500

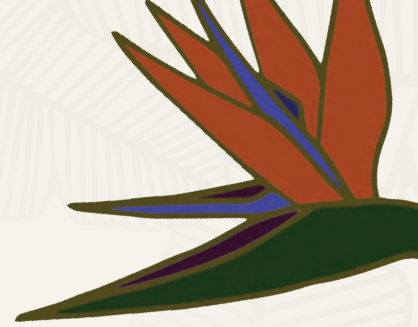


YOUTH DEVELOPMENT \$241,000



\$100,000   \$200,000   \$300,000   \$400,000   \$500,000   \$600,000   \$700,000   \$800,000

# Five-Year Comparative Summary of Grants



|                                 | 2015        |      |  | 2014        |      |  | 2013        |      |  | 2012        |      |  | 2011        |      |  |
|---------------------------------|-------------|------|--|-------------|------|--|-------------|------|--|-------------|------|--|-------------|------|--|
| ARTS, CULTURE & HUMANITIES      | \$538,333   | 15%  |  | \$614,980   | 16%  |  | \$728,472   | 17%  |  | \$572,750   | 15%  |  | \$491,000   | 12%  |  |
| COMMUNITY DEVELOPMENT           | \$150,334   | 4%   |  | \$153,333   | 4%   |  | \$161,333   | 4%   |  | \$75,000    | 2%   |  | \$65,000    | 2%   |  |
| EARLY CHILDHOOD EDUCATION       | \$170,000   | 5%   |  | \$247,691   | 6%   |  | \$378,600   | 9%   |  | \$268,500   | 7%   |  | \$296,500   | 8%   |  |
| EDUCATION                       | \$671,800   | 19%  |  | \$605,170   | 15%  |  | \$959,500   | 22%  |  | \$1,158,002 | 29%  |  | \$1,107,500 | 28%  |  |
| ENVIRONMENT                     | \$676,243   | 19%  |  | \$601,018   | 15%  |  | \$437,000   | 10%  |  | \$504,384   | 13%  |  | \$385,780   | 10%  |  |
| HEALTH                          | \$531,833   | 15%  |  | \$606,050   | 15%  |  | \$492,054   | 11%  |  | \$327,180   | 8%   |  | \$181,733   | 5%   |  |
| HUMAN SERVICES                  | \$501,900   | 14%  |  | \$742,905   | 19%  |  | \$702,900   | 16%  |  | \$780,850   | 20%  |  | \$1,165,899 | 30%  |  |
| OTHER                           | \$2,500     | <1%  |  | \$37,500    | 1%   |  | \$2,500     | <1%  |  | \$0         | 0%   |  | \$27,000    | 1%   |  |
| RELIGION/ SPIRITUAL DEVELOPMENT | \$117,500   | 3%   |  | \$135,750   | 3%   |  | \$112,500   | 3%   |  | \$87,500    | 2%   |  | \$77,500    | 2%   |  |
| YOUTH DEVELOPMENT               | \$241,000   | 7%   |  | \$239,020   | 6%   |  | \$283,500   | 7%   |  | \$175,580   | 4%   |  | \$140,000   | 4%   |  |
| TOTAL GRANTS                    | \$3,601,443 | 100% |  | \$3,983,417 | 100% |  | \$4,258,359 | 100% |  | \$3,949,746 | 100% |  | \$3,937,912 | 100% |  |





# Grant Application Guidelines

The Foundation makes grants for programs and projects that benefit the people of Hawaii. The fields of greatest interest are arts, culture, and humanities; community development; education; environment; health; human services; spiritual development; and youth development. Grant application information can be found on the Foundation's website at [www.athertonfamilyfoundation.org](http://www.athertonfamilyfoundation.org).

## Scholarship Program

The Juliette M. Atherton Scholarship was named in memory of Mrs. Atherton to ensure the continued association of her name and her special interest in Christianity with the Foundation. The scholarship benefits three categories of individuals: dependent sons or daughters of ordained, active Protestant ministers in Hawaii pursuing undergraduate studies; individuals from Hawaii pursuing graduate theological studies at a Protestant seminary with the goal of ordination; and active, ordained Protestant ministers residing in Hawaii seeking an advanced degree. Scholarship recipients are selected based on their financial need and academic promise.

For the 2016–2017 academic year, scholarship awards totaled \$90,000 to 18 students. The directors also award an annual grant to support the Community Scholarship Fund at the Hawaii Community Foundation.

Applications will be available online beginning November 15, 2016 for the 2017–2018 academic year for seminary students, Protestant ministers pursuing advanced degrees, or sons and daughters of Protestant ministers. Application materials, transcript of grades, and personal statement must be submitted by January 31, 2017.

Advanced degree program applicants must provide the place and date of ordination, and the name of the seminary attended to confirm eligibility.

To obtain information about the 2017–2018 scholarship program, please visit [HawaiiCommunityFoundation.org](http://HawaiiCommunityFoundation.org). You may also call the scholarship department at (808) 566-5570 or toll-free for Neighbor Islands at 1 (888) 731-3863.





## ATHERTON FAMILY FOUNDATION

Bank of Hawaii is the fiscal manager for the Atherton Family Foundation.  
Hawaii Community Foundation is the Foundation's grants administrator.

.....

827 Fort Street Mall  
Honolulu, Hawaii 96813  
Phone: (808) 566-5524  
Neighbor Islands call toll-free: 1 (888) 731-3863  
Fax: (808) 521-6286  
Email: [foundations@hcf-hawaii.org](mailto:foundations@hcf-hawaii.org)



*NOTE: We recognize the significance of diacritical markings in written Hawaiian as pronunciation guides, but have opted not to use them in this digital report since they display inconsistently across various computer platforms/browsers and do not conform to search engine optimization.*